

At the Grayson Dry Farm, 1939

BIG 4 SPECS!

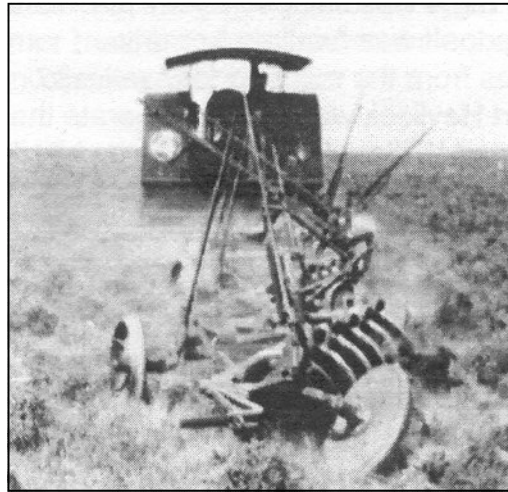
Cost in 1912: \$2,850 Cash FOB Factory
\$3,000 Financed FOB Factory
\$4,000 - \$4,500 Delivered
 The tractor was delivered to
 Piute Springs near Monticello.

Model: 30
Weight: 18,000 lbs.
Piston Diameter: 6 1/2 inch (6 inch on 25 hp)
Piston Stroke: 8 inch
Engine RPM: 650
Pulley RPM: 473
Belt Pulley Diameter: 24 inch
Top Speed: 3 MPH High - 2 MPH Low
Fuel Tank Capacity: 51 gallons
(37 gallons with smaller optional tank)
Radiator Water Capacity: 81 gallons
Towing Capacity: 21,090 lbs.
Drawbar Capacity: 2,750 lbs. per
small tow bar

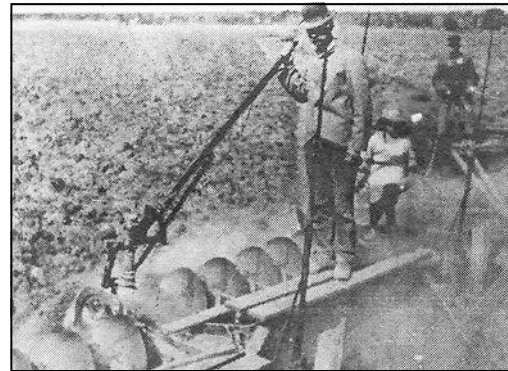
Plowing with the Big 4 and a John Deere
 6 row gang plow with 14 inch plow faces
 on hard unbroken prairie soil,
 the Big 4 would plow 1.27 acres in 44 minutes.
 The tractor would use 4.79 gallons of fuel
 and 0.82 gallons of water.

DONATIONS ARE GRATEFULLY ACCEPTED.

A receipt is available. Please send donation to:
 The Monticello Community Foundation
 P.O. Box 601, Monticello, UT 84535
 Please indicate the donation is for the Big 4.

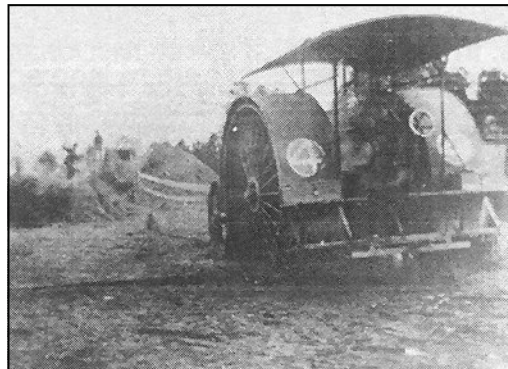


The Big 4 at work near Monticello



Working the gang plow behind the Big 4

"There is no tractor built today that is one-half so
 nearly automatic or will require as little time to keep
 it in perfect running condition as the Big Four."
 From "The Big 4 Book of Instructions"



Using the power take-off

THE BIG 4!



The mechanized revolution that forever
 changed farming in America began in the
 1850's with the development of new and
 exciting machines that made the back
 breaking work of farming easier. J. H.
 Manny, Cyrus McCormick, and others
 competed with one another to develop the
 best machines. J. H. Manny & Company
 was formed in 1854 and soon became the
 largest manufacturer of reapers in the
 world. During the same year, Ralph
 Emerson, cousin of the author Ralph
 Waldo Emerson, joined the firm and the
 company continued to grow. When
 Charles S. Brantingham joined the
 business the company became known as
 Emerson-Brantingham.



Ahead of its time, Emerson and Brantingham envisioned a global business and began to expand, buying other companies including Geiser Manufacturing Company, Osborn Company, Pontiac Buggy Company, Newton Wagon Works, and their last acquisition in 1912 was the Gas Traction Company of Minneapolis, Minnesota. Gas Traction made the Big 4 Tractor. The Gas Traction Company was formed in 1908. They used the engine designed by D. M. Hartsough who started design-ing the Big 4 in 1904 with a massive, four cylinder engine. Emerson-Brantingham promoted the Big 4 line of tractors at fairs and exhibition in the United States and Canada.

Monticello's Big 4 Tractor is one of a small number extant today. The name of Emerson-Brantingham and Gas traction Company is cast in the rear motor mount, indicating the tractor was built in 1912. The Big 4 was initially designed for road work. The San Juan Arid Farm Company purchased the tractor in 1912 for between \$4,000 and \$5,000 to clear 3,200 acres of dry farmland at Piute Knoll and Piute Springs east of Monticello. Members of the Arid Farm Company included Hanson Bayles, Walter C. Lyman, William J. Nix, D. John Rogers, E. F. Thompson, Fred Lyman, Emil Gammeter, and Robert K. Havlicek. Many descendants of these men still live and farm in the Four Corners area.

The Big 4 was shipped by rail from Minneapolis to Dolores, Colorado. It was "walked," or driven, 60 miles from the railhead to Monticello. Robert Havlicek

was hired to operate the Big 4 and William (Bill) Young was hired to haul gasoline to the field. The gas cost between 17 and 25 cents per gallon and was purchased in Durango, Colorado, shipped by rail to Dolores, and hauled to Monticello by gas wagon in six 50 gallon barrels together with needed oil and grease. Bill Young made the 110 mile round trip once a week to keep the Big 4 running.

The tractor was used successfully by the San Juan Arid Farm Company from 1912 to 1915. In 1916 dry weather forced the failure of the company. Dry land farming relies on snow pack and rain fall to water the crop. In dry years, dry land farmers suffer. By 1925 all but Emil Gammeter had left the Arid Farm Company. The tractor was still operable between 1944 and 1946 and used on various farms in the area.

Joe Fury purchased the tractor during that period and used it for two years to clear oak brush. The Big 4 was eventually sold to Bill Barry for \$100 in the late 1950's. In the early 1960's Wes McDonald became interested in the tractor and urged its purchase by the Monticello Chamber of Commerce. In July, 1962 the tractor came to Monticello for a purchase price of \$1,600. Wes McDonald drove the tractor in the July Pioneer Day parade that year and it was then placed in the Monticello City Park as a valuable piece of heritage in this farming community.

Unfortunately, the Big 4 was left open to the



The "WHY" of the BIG FOUR "30"



EMERSON-BRANTINGHAM IMPLEMENT CO.

A page from the book:

"The Why of the Big Four '30' "

Published in 1913

A book written for the farmers of the world.

elements in summer heat and winter snow since 1962.

The Big 4 is an important piece of this area's farming history and it is the goal of the Monticello Community Foundation and a group of dedicated tractor enthusiasts to restore and maintain the Big 4. The Foundation is also raising funds to build a suitable home for it and other antique tractors and farm implements which will be located at the Frontier Museum on Main Street in Monticello, Utah.